

## Pratham-Orissa: The Pathway

All the classes in Cuttack, Orissa run in communities and the place for running the class indifferently made available by the community people. The number of classes though seems low in numbers, but the growth in its understanding, learning in the class room and teaching quality improved a lot from the scratch. Some teachers started believing in the methods of fast learning and outsiders including community people, social organizations showing interest in the way Pratham in Orissa working.

If some attention is provided to the details of children presence in the class, learning levels etc, it can be understood that the growth is invariably slow but steady. Some comparison of children over time is shown below.

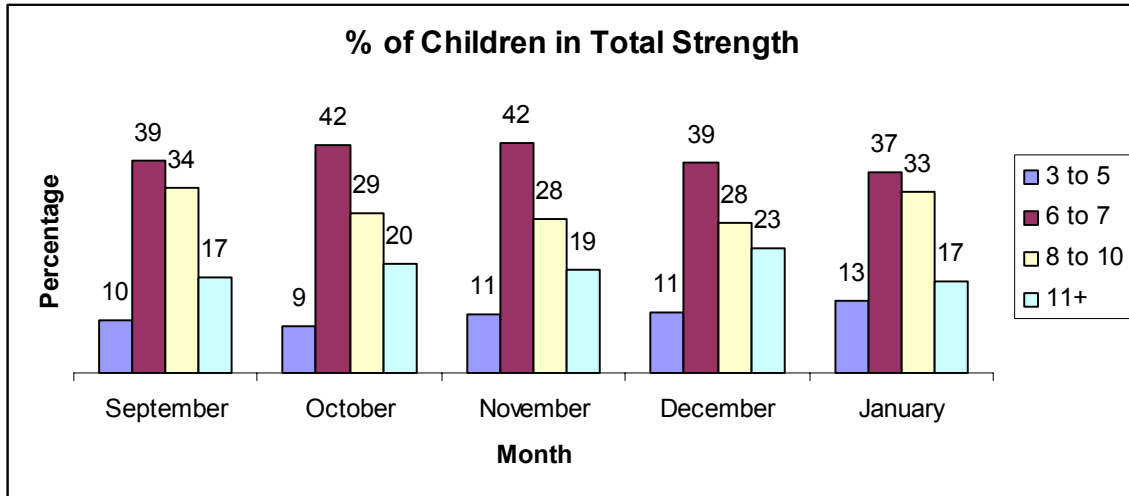
### **1.1 Number of Classes and some Basic Information:**

	<b>Total Units</b>	<b>No of Children Enrolled</b>	<b>Avg No of Children (3-14 yrs)</b>	<b>Avg No of Children (6-14 yrs)</b>	<b>Average class Days</b>
<b>September</b>	16	391	24	22	20
<b>October</b>	15	337	22	21	16
<b>November</b>	17	391	23	21	20
<b>December</b>	14	337	24	21	23
<b>January</b>	25	608	24	21	17

The above table shows the children number and the class over months. Average number of the children per class is shown in both the 3-14 and the 6-14 age groups to have an idea on the actual reports and the actual class room strength. Average class days show a drop in some months due to week day long festivals observed in local area. The average class days remaining around 20 days, the teachers are trying hard to get the activities done in the class room.

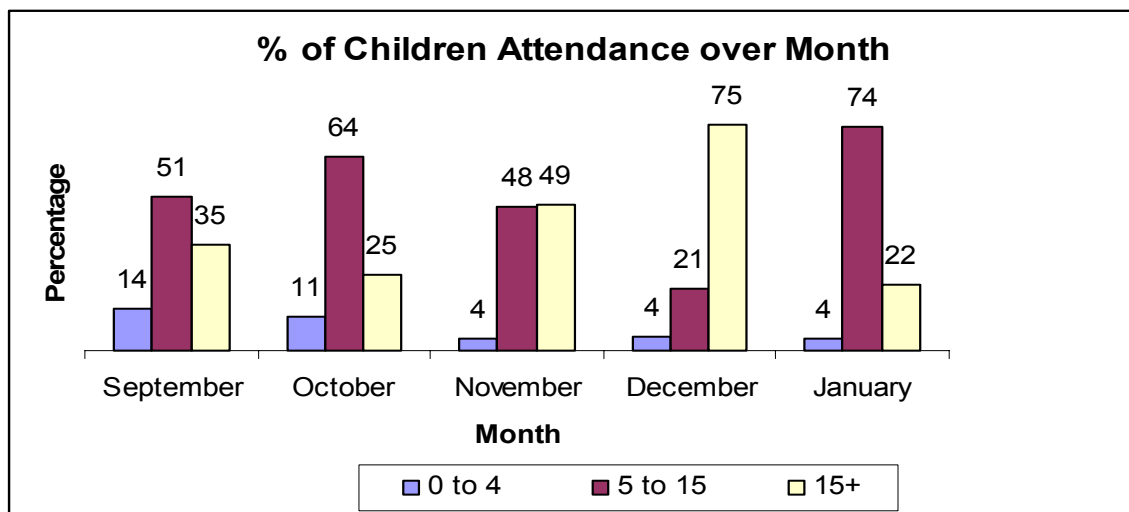
### 1.2 Presence of Different Age Group of Children across Month:

Though the programme is meant only for the age group 6 to 14 years of age, the community just believes the smaller children should get the access to read and they send their children along with the older brother or sister. The ratio is seemingly low around 10% of the strength over months. The age group of 6-10 is major part the children reading and can go to school.



### 1.3 Attendance of Children in the Class across Month:

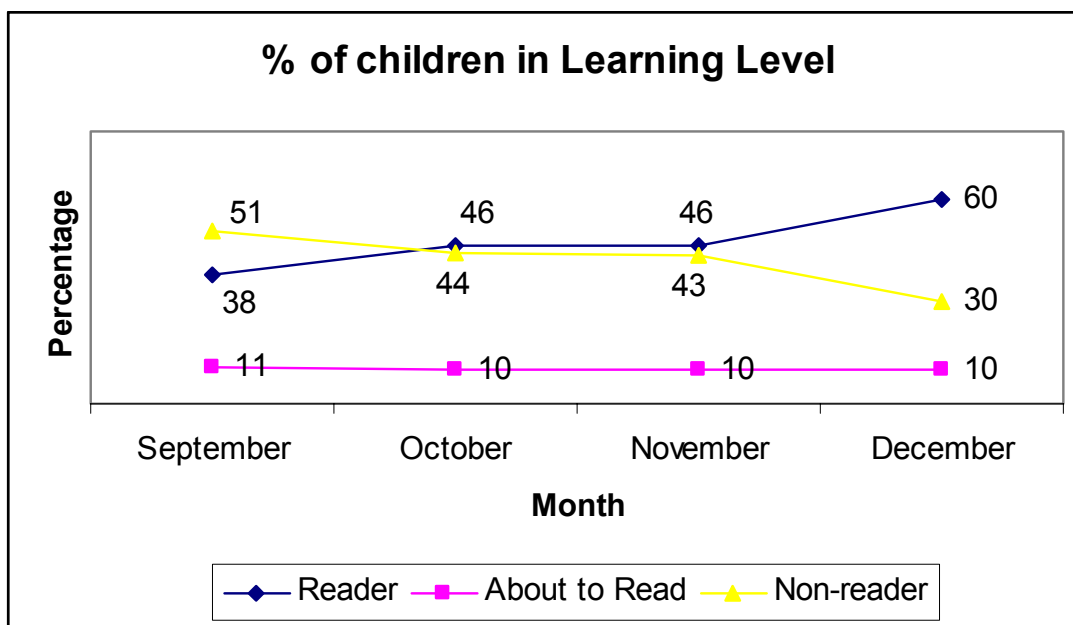
The appearance of children presence in the class shows the interest for the class and level of teachers' participation and interest to make the class lively. But the fact that the local festivals and climatic interference could make it show slightly different.



In September and October the non-presence of children are high due the rain effect but the overall presence of children is approaching to a half month or even more assuming the week day long festivals occurred during the period and the children prefer to go home with their parents rather stay back with the teachers.

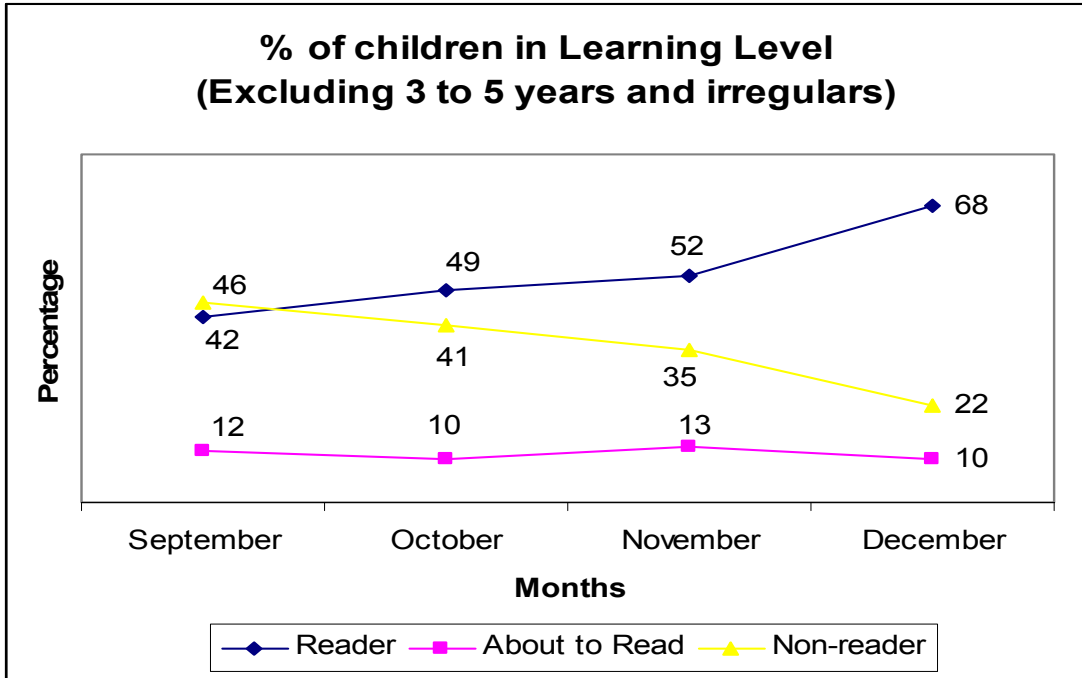
#### 1.4 Percentage of Children in Reading Levels:

Reading levels is the ultimate show up of the programme running in any part. The graph shows a constant increase in the reading level over months and in December making the pick at 60%. But the fact of real results, which is shadowed by the smaller age group children and the non-presenters in the class have a role. Another point to see is the reduction in the non readers. This is constantly reducing from a high point but still a lot to improve.



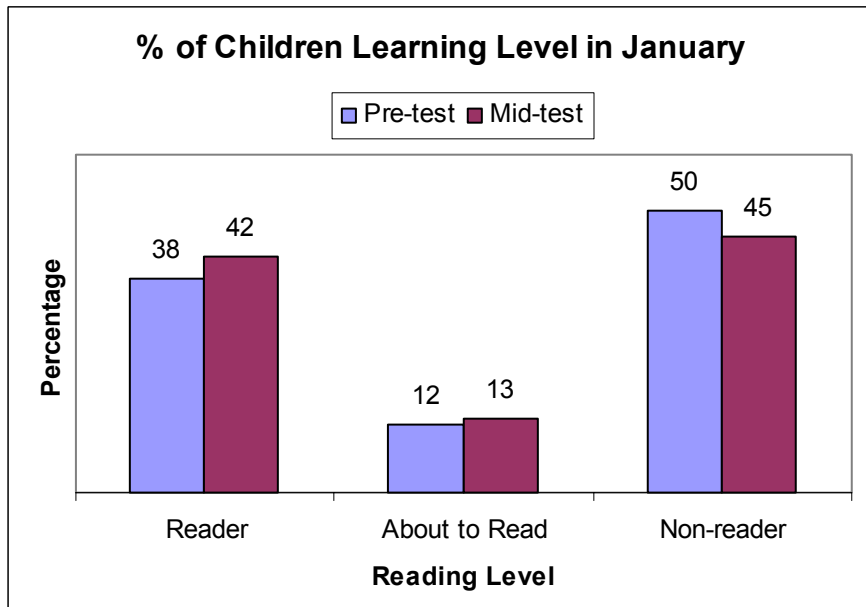
#### 1.5 Percentage of Children in Reading Levels (excluding 3 to 5 yrs of age groups and irregulars):

To see the effectiveness reading technique it was tried to see if the young ones and the irregulars are removed from the list. The result shows little bit upper hand in reading level where the children in not reader category reduces increasing around a 10% increase in the readers. So the slope of both the readers and non readers are in the higher side making a difference in the numbers.



**1.6 Percentage of Children in Reading Levels (in the month of January):**

As many as 17 classes started in January, which shows the level of learning different than the trend shown earlier. Here is a comparison of pretest and mid-test taken by the teachers in January. I hope the results would show a better trend in the next month as the teachers are working harder after the training.



## Annexure: 1

**Table1: Age Category of children across Month**

Month	Number of Children				Total
	3 to 5	6 to 7	8 to 10	11+	
September	38	152	133	68	391
October	29	141	99	68	337
November	42	165	110	74	391
December	37	130	93	77	337
January	80	224	201	103	608

**Table2: Attendance of children across Month**

	Total Boys	Total Girls	Attendance			
			0-4 Days	5-15 days	15+ days	Total
September	218	173	53	200	138	391
October	138	199	37	216	84	337
November	165	226	15	186	190	391
December	137	200	15	70	252	337
January	290	319	23	451	134	608

**Table 3: Reading Level of Children across Month**

	Story	Para	Word	Letter	Nothing	Total
Sep	90	40	38	80	94	342
Oct	116	31	31	86	55	319
Nov	118	29	33	74	63	317
Dec	143	30	28	51	35	287

**Table 4: Reading Level of Children across Month (excluding 3 to 5 yrs of age groups and irregulars)**

	<b>Story</b>	<b>Para</b>	<b>Word</b>	<b>Letter</b>	<b>Nothing</b>	<b>Total</b>
<b>Sep</b>	90	40	36	64	76	306
<b>Oct</b>	112	31	30	76	43	292
<b>Nov</b>	120	31	38	61	40	290
<b>Dec</b>	150	36	26	37	24	273

**Table 5: Reading Level of Children in January**

	<b>Story</b>	<b>Para</b>	<b>Word</b>	<b>Letter</b>	<b>Nothing</b>	<b>Total</b>
	71	30	40	62	146	349
Pre-test	175	61	76	82	177	571
Mid-test	0	0	0	0	0	0